



Australian Government

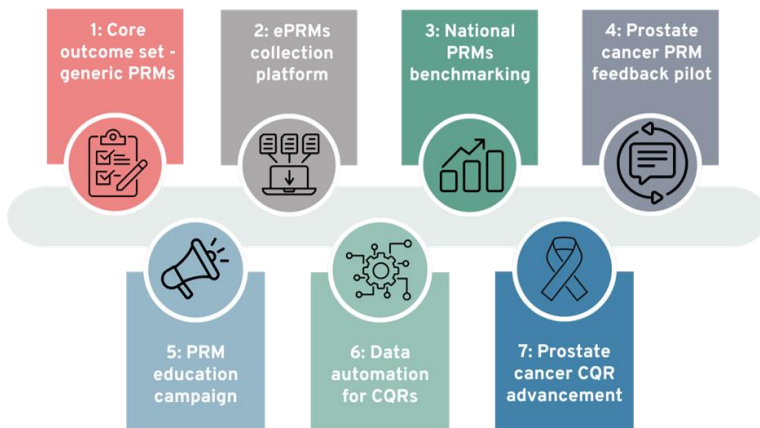


MOVEMBER®

AUSTRALIAN REAL WORLD CANCER EVIDENCE NETWORK (PAN CANCER INITIATIVE)

FEBRUARY 2026 NEWSLETTER

THE SEVEN WORK PACKAGES



QUARTERLY UPDATE – THANK YOU FOR JOINING US!

Thank you to everyone who joined us for the Quarterly Update on 24 February. It's fantastic to see everyone and to engage with the wider Consortium.

If you missed the session, you can watch the full recording [here](#) using the passcode vB90sV2@

Here's what the session covered:

- Nick Cristofani-Wykes provided an update on progress across the Work Packages and outlined the key priorities for 2026
- Emily Symons presented on why we chose to develop an Australian specific Core Outcome Set (COS)
- Emma Tod provided an update on the Lived Experience workshops held as part of Work Package 4: A Public Feedback Mechanism for Prostate Cancer Patients
- A dedicated Q&A session to answer questions and listen to your feedback

WORK PACKAGE 6 CQR DATA AUTOMATION GRANT FUNDING OPPORTUNITY

On 9 February, the Pan Cancer Initiative launched the CQR Data Automation Grant Funding Opportunity.

These grants aim to provide successful applicants with funding to deliver 6-12-month projects that improve the efficiency and sustainability of CQRs through data automation.

Proposals should promote cross-jurisdictional or cross-registry collaboration so that benefits are shared across multiple CQRs and/or jurisdictions.

The funding round is limited to the 10 Pan Cancer Consortium CQRs, and applications close on 3 April at 23:59.

If you have any questions around the opportunity, please reach out to the team at pancancer@movember.com.



OFFICIAL



Australian Government



MOVEMBER®

AUSTRALIAN REAL WORLD CANCER EVIDENCE NETWORK (PAN CANCER INITIATIVE)

FEBRUARY 2026 NEWSLETTER

WORK PACKAGE 1 REQUEST FOR PROPOSAL

Following the development of the Core Outcome Set (COS), our Expert Advisory Group identified a key opportunity: for the COS to realise its full potential and value to the cancer sector, the agreed domains must be explicitly linked to validated PROMs and PREMs instruments.

Addressing this gap presents an opportunity to extend the scope of Work Package 1, establishing the foundational guidance to support consistent and effective adoption across the sector by recommending primary and supplementary measures to collect the COS.

To achieve this, a small-scale Request for Proposal was launched to identify a supplier to undertake two phases of work:

- Phase 1: Mapping of existing PROMs and PREMs to the COS; and
- Phase 2: Development of a basic toolkit to support widespread implementation.

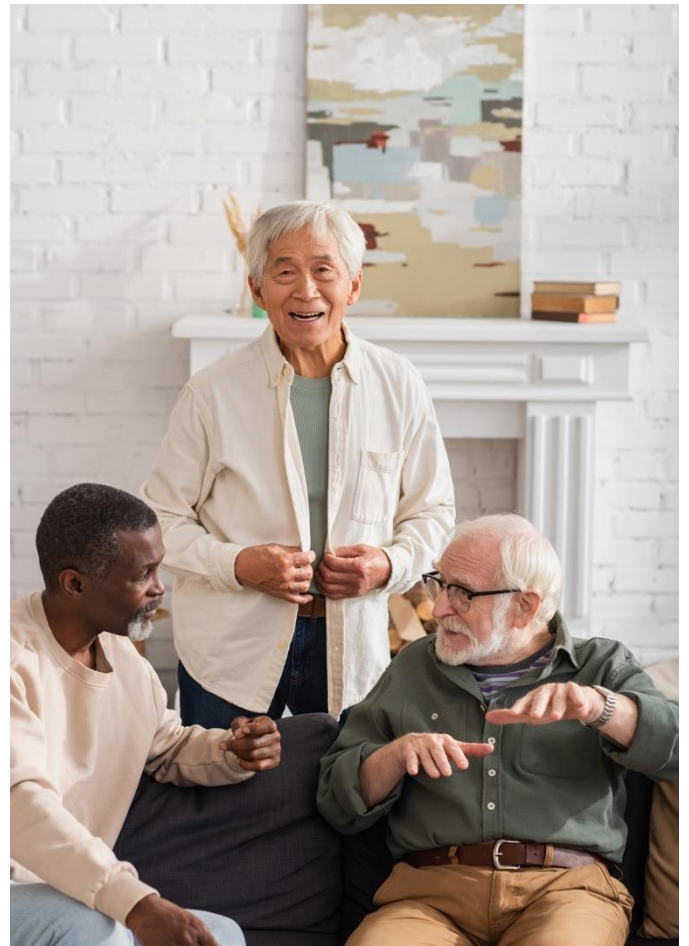
We are pleased to announce that Monash University, led by A/Prof Sandra Nolte, will undertake Phase 1, and University of New South Wales, led by Dr Carolyn Mazariego, will undertake Phase 2.

The work is expected to be completed in line with the existing Work Package 1 timeline of completion by 31 May 2026.

CONTACT US

Got a question? Want to join the consortium?

Visit our website at www.pancancer.movember.com or send us an email at pancancer@movember.com.



We would like your feedback.

Scan the QR code to let us know what you'd like to read about in future newsletters.